



Komunica[®]

Giving Shape to your Accessories



Professional & Ham Radio Antennas
Antenas Profesionales & HAM Radio

www.komunicapower.com



Komunica[®]

Giving Shape to your Accessories

Wide Range of Professional
& HAM Radio Antennas



HF-PRO-1 Portable Antenna Wide Band 7-430MHz

HF-PRO-1 Portable Antenna Wide Band 7-430MHz

Supplies, Batteries & Earphones Microphones



Other accessories



HAM Radio Antennas

Antenas Radioaficionado

HF Wide Band Movil Antenna

Antena Móvil HF Banda Ancha

BAZOKA-PRO

Ref.	BAZOKA-Pro
Type Tipo	Movil Antenna Movil Antena
Frequency Range Rango de Frecuencia	Tx: 7~54MHz RX: 3~70MHz
Max Power Rating Potencia Máxima	120W(SSB) 40W (FM)
Impedance Impedancia	50 Ω
Length Altura	1.22 m
Weight Peso	680 g



Wide Band Portable Antenna 7-430 MHz

Antena Portable de Banda Ancha 7-430 MHz

Serie HF-PRO-1

Portable Antenna 1/4 wave reduced type (HF Band).
 1/4 wave (50/144MHz), 5/8 wave (144/430MHz).
 144MHz band can be operated at both 1/4 wave and 5/8 wave by the length of the rod element.

Antena Portable 1/4 de onda reducido (HF Band). 1/4 de onda (50/144MHz), 5/8 de onda (144/430MHz).
 La banda 144MHz puede operar en ambas, 1/4 de onda y como 5/8 de onda, con el elemento adicional adecuado.

Ref.	HF-PRO-1
Type Tipo	Portable Antenna Antena Portable
Frequency Range Rango de Frecuencia	7-430 MHz
Max Power Rating Potencia Máxima	130W (SSB)
Impedance Impedancia	50 Ω
Height Altura	0.5 - 1.77m
Connector Conector	PL
Accessories Accesorios	Additional Elements (Short/Large) Elementos adicionales (Corto/Largo)

Additional Elements
(Short/Large)
Elementos adicionales
(Corto/Largo)



Scale / Escala

HF Mobile Monoband Antennas

Antenas Móvil HF Monobanda

Serie RANGER



Ref.	RANGER-6	RANGER-20	RANGER-40	RANGER-80
Type Tipo	1/4 λ	1/4 λ	1/4 λ	1/4 λ
V.S.W.R	Less than 1.5	Less than 1.5	Less than 1.5	Less than 1.5
Frequency Frecuencia	51 MHz	14 MHz	7 MHz	3.5 MHz
Max. Power Potencia Max.	150 W	150 W	150 W	150 W
Impedance Impedancia	50 Ω	50 Ω	50 Ω	50 Ω
Height Altura	1160 mm	1260 mm	1560 mm	1560 mm
Weight Peso	230 g	250g	295 g	300 g
Connector Conector	PL	PL	PL	PL

8 Bands Portable Antenna (HF+2m+6m+Airband)

8 Bandas Antena Portable (HF+2m+6m+Airband)

HF-EXPLORER-1

Ref.	HF-EXPLORER-1
Type Tipo	Portable Antenna 8 Bands Antena Portable 8 Bandas
Power Potencia	120W
Gain Ganancia	0 dbi
Impedance Impedancia	50 Ω
V.S.W.R.	Less than 1.5
Lenght Longitud	130~175cm
Weight Peso	350g
Connector Conector	PL



Band center Centro de Banda	Frequency in MHz Frecuencia en MHz	Connections Conexiones	Lenght aprox.of Telescopic whip Longitud aprox.varilla telescop.
80 m	3,50 MHz	Not connected Sin conectar	125,5 cm
40 m	7,00 MHz	No.1 + No.2	125,5 cm
20 m	14,00 MHz	No.1 + No.3	125,5 cm
15 m	21,00 MHz	No.1 + No.4	125,5 cm
10 m	28,50 MHz	No.1 + No.5	125,5 cm
6 m	50,00 MHz	No.1 + No.6	96,0 cm
2 m	144,5 MHz	No.1 + No.6	97,0 cm
Airband	118 / 136 MHz	No.1 + No.6	125,5 cm

9 Bands Portable Antenna HF + 6m

9 Bandas Antena Portable HF + 6m

HF-EXPLORER-2

Ref.	HF-EXPLORER-2
Type Tipo	Portable Antenna 10 Bands Antena Portable 10 Bandas
Power Potencia	200W
Gain Ganancia	0 dbi
Impedance Impedancia	50 Ω
Lenght Longitud	117~156cm
Weight Peso	610g
Connector Conector	PL



Band center Centro de Banda	Frequency in MHz Frecuencia en MHz	Connections Conexiones	Lenght aprox.of Telescopic whip Longitud aprox.varilla telescop.
80 m	3,50 MHz	Not connected Sin conectar	48,5 cm
80 m	3,60 MHz	Not connected Sin conectar	48,5 cm
80 m	3,70 MHz	Not connected Sin conectar	48,5 cm
80 m	3,80 MHz	Not connected Sin conectar	48,5 cm
40 m	7,00 MHz	No.1 + No.2	60,0 cm
30 m	10,0 MHz	No.1 + No.3	60,0 cm
20 m	14,00 MHz	No.1 + No.4	88,0 cm
17 m	18,00 MHz	No.1 + No.5	88,0 cm
15 m	21,00 MHz	No.1 + No.6	82,0 cm
12 m	24,90 MHz	No.1 + No.7	66,5 cm
11 m	27,00 MHz	No.1 + No.8	58,0 cm
10 m	28,50 MHz	No.1 + No.8	58,0 cm
6m	50 MHz	No.1 + No.9	52,1 cm

12 Bands Portable Antenna (HF+2m+6m+Airband)

12 Bandas Antena Portable (HF+2m+6m+Airband)

HF-EXPLORER-3

Ref.	HF-EXPLORER-3
Type Tipo	Portable Antenna 12 Bands Antena Portable 12 Bandas
Power Potencia	200W
Gain Ganancia	0 dbi
Impedance Impedancia	50 Ω
Length Longitud	117~162cm
Weight Peso	635g
Connector Conector	3/8" PL



Band center Centro de Banda	Frequency in MHz Frecuencia en MHz	Connections Conexiones	Length aprox.of Telescopic whip Longitud aprox.varilla telescop.
80 m	3,80 MHz	Not connected Sin conectar	60,5 cm
40 m	7,00 MHz	No.1 + No.2	54,0 cm
30 m	10,0 MHz	No.1 + No.3	59,0 cm
20 m	14,00 MHz	No.1 + No.4	81,0 cm
17 m	18,00 MHz	No.1 + No.5	85,0 cm
15 m	21,00 MHz	No.1 + No.6	79,5 cm
12 m	24,90 MHz	No.1 + No.7	63,5 cm
11 m	27,00 MHz	No.1 + No.8	63,5 cm
10 m	28,50 MHz	No.1 + No.8	53,5 cm
6m	50,00 MHz	No.1 + No.9	50,0 cm
2m	145,0 MHz	No.1 + No.9	72,5 cm
Airband	118 /136Mhz	No.1 + No.9	92,2 cm

Mobile Antennas

Antenas Movil

Serie FLEX & FIBER

Ref.	PWR-504-FLEX	PWR-507-FIBER
Type Tipo	Mobile Antenna / Antena Móvil	Mobile Antenna / Antena Móvil/ Fiber Glass/ Fibra de Vidrio
Frequency Frecuencia	144-430 MHz	144-430 MHz
Gain Ganancia	0 dBi 144 MHz 2.15dBi 430MHz	2.15 dBi 144 MHz 5 dBi 430 MHz
Max Power Rating Potencia Máxima	80W	80 W
Impedance Impedancia	50 Ω	50 Ω
Height Altura	430 mm	740 mm
Connector Conector	PL	PL
Weight Peso	122 g	149 g



Versión Flex



Mobile HAM Radio Antennas

Antenas Movil Radioaficionado

Serie SG



Ref.	PWR-SG-7000	PWR-SG-7500	PWR-SG-7900
Type Tipo	Mobile Antenna / Antena Móvil	Mobile Antenna / Antena Móvil	Mobile Antenna / Antena Móvil
Gain Ganancia	2.15 dBi 144 MHz 3.8 dBi 430 MHz	3.5 dBi 144 MHz 6 dBi 430 MHz	5 dBi 144 MHz 7.6 dBi 430 MHz
Frequency Frecuencia	144-430 MHz	144-430 MHz	144-430 MHz
Max Power Rating Potencia Máxima	100W	150W	150W
Impedance Impedancia	50 Ω	50 Ω	50 Ω
Height Altura	470 mm	1050 mm	1580 mm
Connector Conector	PL	PL	PL
Flip-up Abatible	No	± 80°	± 80°

Mobile HAM Radio Antennas

Antenas Movil Radioaficionado

Serie NR



Ref.	PWR-NR-770-H	PWR-NR-770-HB	PWR-NR-770-R	PWR-NR-770-RB	PWR-NR-770-S
Type Tipo	Mobile Antenna / Antena Móvil	Mobile Antenna / Antena Móvil	Mobile Antenna / Antena Móvil	Mobile Antenna / Antena Móvil	Mobile Antenna / Antena Móvil
Gain Ganancia	2.1 dBi 144 MHz 5.5 dBi 430 MHz	2.1 dBi 144 MHz 5.5 dBi 430 MHz	2.1 dBi 144 MHz 5.5 dBi 430 MHz	3 dBi 144 MHz 5.5 dBi 430 MHz	2.15 dBi 144/430 MHz
Frequency Frecuencia	144-430 Mhz	144-430 Mhz	144 - 430 Mhz	144 - 439 Mhz	144 - 430 Mhz
Max Power Rating Potencia Máxima	200W	200W	200W	200W	100W
Impedance Impedancia	50 Ω	50 Ω	50 Ω	50 Ω	50 Ω
Height Altura	1020 mm	1020 mm	980 mm	980 mm	430 mm
Connector Conector	PL	PL	PL	PL	PL
Flip-up Abatible	± 70°	± 70°	± 50	± 50	NO

Mobile HAM Radio Antennas

Antenas Movil Radioaficionado



Ref.	PWR-NR-66	PWR-NR-77-B	PWR-SB-7	PWR-SB-8
Type Tipo	Mobile Antenna / Antena Móvil	Mobile Antenna / Antena Móvil	Mobile Antenna / Antena Móvil	Mobile Antenna / Antena Móvil
Gain Ganancia	2.15 dBi 145 MHz 3.8 dBi 435 MHz	2.15 dbi (430 MHz)	0dBi (144MHz) 2.15dBi (430MHz)	0dbi (144MHz) 2.15dBi (430MHz)
Frequency Frecuencia	137-152MHz 425-460MHz	144-430 MHz	144-430 MHz	144-430 MHz
Max Power Rating Potencia Máxima	100W	100W	10 W	10 W
Impedance Impedancia	50 Ω	50 Ω	50 Ω	50 Ω
Height Altura	420 mm	430 mm	220 mm	215 mm
Connector Conector	PL	PL	PL	PL

HAM Radio Walkie Antennas

Antenas Walkie Radioaficionado



Ref.	PWR-SRH-536	PWR-SRH-536-SMAF	PWR-SRH-701-SMAF	PWR-SRH-701-S
Type Tipo	Antena Walkie	Antena Walkie	Antena Walkie	Antena Walkie
Frequency Frecuencia	VHF-UHF (144-430 MHz) RX 120,150,300, 800, 900 Mhz	VHF-UHF (144-430 MHz) RX 120,150,300, 800, 900 Mhz	VHF-UHF (144-430 MHz) RX 120,150,300, 800, 900 Mhz	VHF-UHF (144-430 MHz) RX 120,150,300, 800, 900 Mhz
Gain Ganancia	2.15 dBi (430 MHz)	2.15 dBi (430 MHz)	2.15 dBi (430 MHz)	2.15 dBi (430 MHz)
Max Power Rating Potencia Máxima	10W	10W	10W	10W
Impedance Impedancia	50 Ω	50 Ω	50 Ω	50 Ω
Height Altura	360 mm	360 mm	190 mm	190 mm
Connector Conector	SMA	SMAF	SMAF	SMA

HAM Radio Walkie Antennas

Antenas Walkie Radioaficionado



Ref.	PWR-SRH-40-S	PWR-SRH-40-S-SMAF	PWR-SRH-519	PWR-SRH-519-SMAF
Type Tipo	Antena Walkie Malleable / Maleable	Antena Walkie Malleable / Maleable	Antena Walkie	Antena Walkie
Frequency Frecuencia	VHF-UHF (144-430 MHz)	VHF-UHF (144-430 MHz)	VHF-UHF (144-430 MHz)	VHF-UHF (144-430MHz)
Gain Ganancia	3 dBi (430 MHz)	3 dBi (430 MHz)	3 dBi (430 MHz)	3 dBi (430 MHz)
Max Power Rating Potencia Máxima	10W	10W	10W	10W
Impedance Impedancia	50 Ω	50 Ω	50 Ω	50 Ω
Height Altura	420 mm	420 mm	210 mm	210 mm
Connector Conector	SMA	SMAF	SMA	SMAF

HAM Radio Antennas

Antenas Walkie Radioaficionado



Ref.	PWR-SRH-771	PWR-SRH-771-SMAF	PWR-SRH-775	PWR-SRH-805	PWR-SRH-999
Type Tipo	Antena Walkie	Antena Walkie	Antena Walkie Telescopic Telescopica	Antena Walkie Scanner	Antena Walkie
Frequency Frecuencia	VHF-UHF (144-430 MHz) RX 120,150,300, 800, 900 MHz Flexible	VHF-UHF (144-430 MHz) RX 120,150,300, 800, 900 MHz Flexible	VHF-UHF (144-430 MHz) RX 120,150,300, 800, 900 MHz	VHF-UHF (144-430-1200 MHz) RX: 300/ 450/ 1200 MHz	VHF-UHF-SHF (50-144-430-1200 MHz) 50-144 Mhz 1/4 Onda, 430 MHz 1/2 Onda, 1200 MHz 2x5/8 Onda RX: FM, 120,150,300, 800, 900 MHz
Gain Ganancia	2.15 dBi (430 MHz)	2.15 dBi (430 MHz)	2.15 dBi (430 MHz)	2.15 dBi (430 MHz)	4 dBi (430 MHz)
Max Power Rating Potencia Máxima	10W	10W	10W	6W	10W
Impedance Impedancia	50 Ω	50 Ω	50 Ω	50 Ω	50 Ω
Height Altura	400 mm	400 mm	115/410 mm	45 mm	500 mm
Connector Conector	SMA	SMAF	SMA	SMA	SMA

HAM Walkie Antennas

Antenas Walkie Radioaficionado



Ref.	PWR-RH-536	PWR-RH-771	PWR-CT-7000	PWR-RH-701-T
Type Tipo	Antena Walkie	Antena Walkie	Antena Walkie Telescopic / Telescopica	Antena Walkie Airband / Banda Aérea
Gain Ganancia	2.15 dBi (430 MHz)	2.15 dBi (430 MHz)	2.15 dBi (144 MHz)	2.15 dBi (430 MHz)
Frequency Frecuencia	VHF-UHF (144-430 MHz) RX 120,150,300, 800, 900 MHz	VHF-UHF (144-430 MHz) RX 120,150,300, 800, 900 MHz	VHF (144 MHz)	VHF-UHF (144-430 MHz) RX 120,150,300, 800, 900 MHz
Max Power Rating Potencia Máxima	10W	10W	10W	10W
Impedance Impedancia	50 Ω	50 Ω	50 Ω	50 Ω
Height Altura	360 mm	400 mm	256 mm - 1080 mm	210 mm
Connector Conector	BNC	BNC	BNC	BNC

Special RX Scanner Antennas

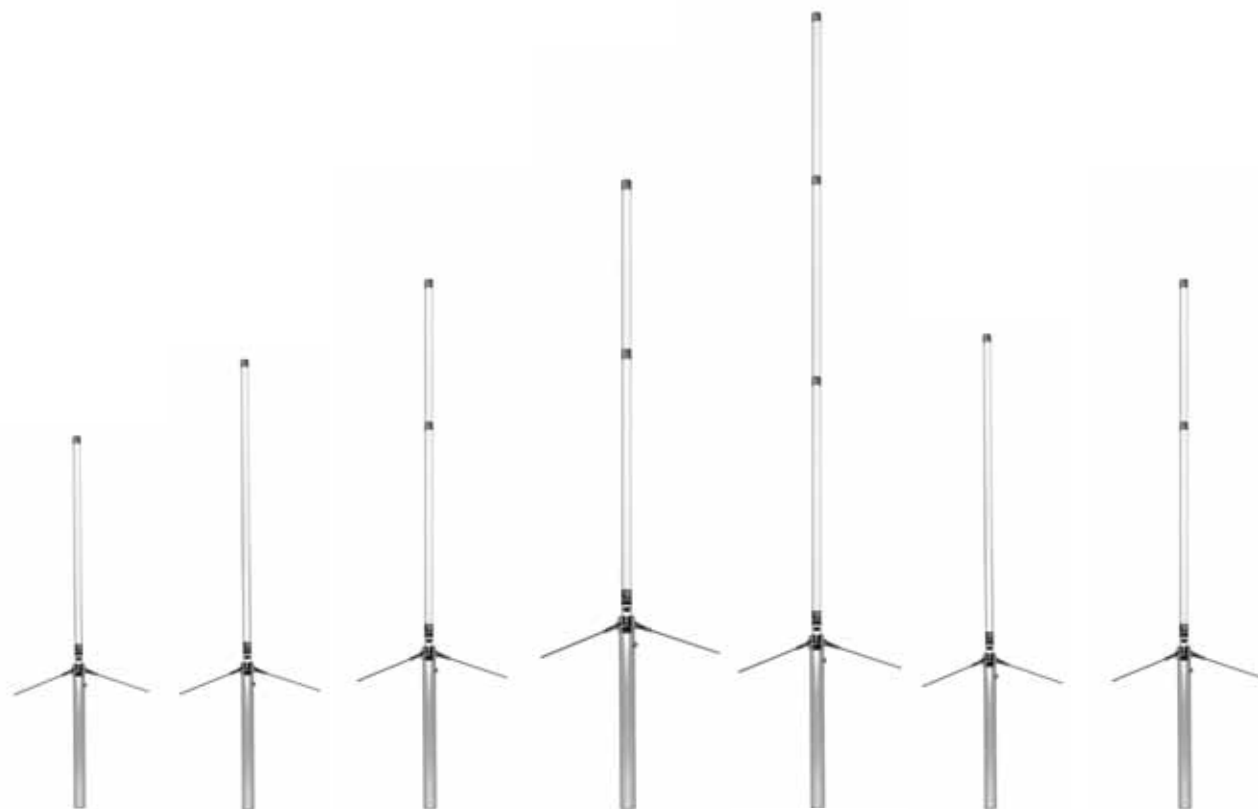
Antenas Especiales RX Scanner



Ref.	PWR-SRH-789	PWR-RH-795
Type Tipo	Antena Walkie Telescopic. Hinged casement / Telescópica. Abatible con bisagra	Antena Walkie Telescopic
Stages Tramos	6 tramos	10 tramos
Frequency Frecuencia	VHF-UHF (144-430 MHz) RX 95,120,150,300, 800,900,1100 MHz	VHF-UHF (144-430 MHz) RX 70,120,150,300, 800,900,1000 MHz
Gain Ganancia	2.15 dBi (430 MHz)	2.15 dBi (430 MHz)
Max Power Rating Potencia Máxima	10W	10W
Impedance Impedancia	50 Ω	50 Ω
Height Altura	200 mm - 805 mm	195 mm - 1150 mm
Connector Conector	SMA	BNC

Fiber-glass HAM Radio Antennas

Antenas Fibra Radioafición



Ref.	X-30-PWR	X-50-PWR	X-200-2-PWR	X-300-PWR	X-510-PWR	X-5000-PWR	V-2000-PWR
Type Tipo	Antena Base Fiber Glass / Fibra Vidrio	Antena Base Fiber Glass / Fibra Vidrio	Antena Base Fiber Glass / Fibra Vidrio 2 Sections / 2 Tramos	Antena Base Fiber Glass / Fibra Vidrio 2 Sections / 2 Tramos	Antena Base Fiber Glass / Fibra Vidrio	Antena Base Fiber Glass / Fibra Vidrio	Antena Base Fiber Glass / Fibra Vidrio 2 Sections / 2 Tramos
Gain Ganancia	VHF: 3.0 dBi UHF: 5.5 dBi	VHF: 4.5 dBi UHF: 7.2 dBi	VHF: 6 dB UHF: 8 dB	VHF: 6.5 dB UHF: 9 dB	VHF: 8.3 dBi UHF: 11.7 dBi	VHF - 4.5 dBi UHF - 8.3 dBi	VHF: 2.15 dBi UHF: 8.4 dBi
Frequency Frecuencia	144-430 MHz	144-430 MHz	144-430 MHz	144-430 MHz	144-430 MHz	144-430-1200 MHz	50-144-430 MHz
Max Power Rating Potencia Máxima	150W	350W	350W	100W	350W	100W	350W
Impedance Impedancia	50 Ω	50 Ω	50 Ω	50 Ω	50 Ω	50 Ω	50 Ω
Height Altura	1300 mm	1700 mm	2500 mm	3100 mm	5500 mm	1800MM	2500 mm
Connector Conector	N	N	N	N	N	N	PL

Discone Antennas

Antenas Discone



Ref.	PWR-D-130	PWR-D-3000
Type Tipo	Antena Discone Wide Band	Antenna Discone Ultra Compact Mini-dual Band 144~1200 MHz
Gain Ganancia	2 dBi	2.15 dBi (144 MHz) 3 dBi (430, 900, 1200 MHz)
Frequency Frecuencia	RX: 25 ~1300 MHz Continuous Coverage TX: 50, 144, 430, 900, 1200 MHz	RX: 75 ~ 3000 MHz Continuous Coverage TX: 144, 430, 900, 1200 MHz
Max Power Rating Potencia Máxima	200W -144 MHz 20W - 50 MHz	50W
Impedance Impedancia	50 Ω	50 Ω
Height Altura	1750 mm	860 mm
Connector Conector	PL	PL

Professional Antennas

Antenas Profesionales

Wide Band Antennas, Vertex / Yaesu Compatible

Antenas Banda Ancha, Compatibles Vertex / Yaesu



Ref.	Y1-U-SMA-M	Y2-V-SMA-M	Y2-U1-SMA-M	Y2-U2-SMA-M
Type Tipo	Wide Band	Wide Band	Wide Band	Wide Band
Frequency Frecuencia	UHF 440-470 Mhz	VHF 136-174 Mhz	UHF 400-440 Mhz	UHF 440-470 Mhz
Max Power Rating Potencia Máxima	50W	50W	50W	50W
Gain Ganancia	2.15 dBi	1.8 dBi	1.8 dBi	1.8 dBi
Radiation Radiación	Omni	Omni	Omni	Omni
Polarization Polarización	Vertical	Vertical	Vertical	Vertical
VSWR	Less than 1.5	Less than 1.5	Less than 1.5	Less than 1.5
Height Altura	159 mm	89 mm	89 mm	89 mm
Connector Type Tipo de conector	SMA-Male 	SMA-Male 	SMA-Male 	SMA-Male 

Wide Band Antennas, Compatible Kenwood

Antenas Banda Ancha, Compatibles Kenwood




Ref.	K1-V1-SMA-F	K1-V2-SMA-F	K1-V3-SMA-F	K2-U1-SMA-F	K2-U2-SMA-F
Type Tipo	Wide Band	Wide Band	Wide Band	Wide Band	Wide Band
Frequency Frecuencia	VHF 136-150 Mhz	VHF 146-162 Mhz	VHF 162-174 Mhz	UHF 400-440 Mhz	UHF 440-470 Mhz
Max Power Rating Potencia Máxima	50W	50W	50W	50W	50W
Gain Ganancia	1.8 dBi	1.8 dBi	1.8 dBi	1.8 dBi	1.8 dBi
Radiation Radiación	Omni	Omni	Omni	Omni	Omni
Polarization Polarización	Vertical	Vertical	Vertical	Vertical	Vertical
VSWR	Less than 2	Less than 2	Less than 2	Less than 2.5	Less than 2.5
Height Altura	110 mm	110 mm	110 mm	80 mm	80 mm
Connector Type Tipo de conector	SMA-Female 	SMA-Female 	SMA-Female 	SMA-Female 	SMA-Female 

Wide Band Antennas, Compatible Kenwood

Antenas Banda Ancha, Compatibles Kenwood





Ref.	K3-U1-SMA-F	K3-U2-SMA-F	K4-U1-SMA-F	K4-U2-SMA-F
Type Tipo	Wide Band	Wide Band	Wide Band	Wide Band
Frequency Frecuencia	UHF 400-440 Mhz	UHF 440-470 Mhz	UHF 400-440 Mhz	UHF 440-470 Mhz
Max Power Rating Potencia Máxima	50W	50W	50W	50W
Gain Ganancia	2.15 dBi	2.15 dBi	1.8 dBi	1.8 dBi
Radiation Radiación	Omni	Omni	Omni	Omni
Polarization Polarización	Vertical	Vertical	Vertical	Vertical
VSWR	Less than 2.5	Less than 2.5	Less than 2.5	Less than 2.5
Height Altura	150 mm	150 mm	76 mm	76 mm
Connector Type Tipo de conector	SMA-Female 	SMA-Female 	SMA-Female 	SMA-Female 

Wide Band Antennas Compatible Kenwood

Antenas Banda Ancha, Compatibles Kenwood



Ref.	K5-V-SMA-F	K5-U-SMA-F
Type Tipo	Wide Band	Wide Band
Frequency Frecuencia	VHF 134-174 Mhz	UHF 440-470 Mhz
Max Power Rating Potencia Máxima	50W	50W
Gain Ganancia	1.8 dBi	1.8 dBi
Radiation Radiación	Omni	Omni
Polarization Polarización	Vertical	Vertical
VSWR	Less than 2.5	Less than 2
Height Altura	110 mm	76 mm
Connector Type Tipo de conector	SMA-Female 	SMA-Female 

Wide Band Antennas, Compatible Motorola

Antenas Banda Ancha, Compatibles Motorola







Ref.	M1-V-MOTO	M1-U-MOTO	M2-U1-MOTO	M2-U2-MOTO	M3-V-MOTO
Type Tipo	Wide Band	Wide Band	Wide Band	Wide Band	Wide Band
Frequency Frecuencia	VHF 134-174 Mhz	UHF 430-470 Mhz	UHF 400-440 Mhz	UHF 440-470 Mhz	VHF 134-174 Mhz
Max Power Rating Potencia Máxima	50W	50W	50W	50W	50W
Gain Ganancia	2 dBi	2 dBi	2.15 dBi	2.15 dBi	2 dBi
Radiation Radiación	Omni	Omni	Omni	Omni	Omni
Polarization Polarización	Vertical	Vertical	Vertical	Vertical	Vertical
VSWR	Less than 2.5	Less than 2.5	Less than 2.5	Less than 2.5	Less than 2.5
Height Altura	92 mm	92 mm	160 mm	160 mm	152 mm
Connector Type Tipo de conector	Moto Stud Connector	Moto Stud Connector	Moto Stud Connector	Moto Stud Connector	Moto Stud Connector

Wide Band Antennas, Compatible Icom

Antenas Banda Ancha, Compatibles Icom



Ref.	I1-U-ICO	I2-V-ICO	I3-V-ICO	I3-U-ICO
Type Tipo	Wide Band	Wide Band	Wide Band	Wide Band
Frequency Frecuencia	UHF 440-470 Mhz	VHF 136-174 Mhz	VHF 134-174 Mhz	UHF 430-470 Mhz
Max Power Rating Potencia Máxima	50W	50W	50W	50W
Gain Ganancia	1.8 dBi	1.8 dBi	1.8 dBi	1.8 dBi
Radiation Radiación	Omni	Omni	Omni	Omni
Polarization Polarización	Vertical	Vertical	Vertical	Vertical
VSWR	Less than 2.5	Less than 1.8	Less than 2.5	Less than 2.5
Height Altura	159 mm	165 mm	88 MM	89 mm
Connector Type Tipo de co- nector	ICOM Stud Connector 	ICOM Stud Connector 	ICOM Stud Connector 	ICOM Stud Connector 

Wide Band Antennas, Compatible Icom

Antenas Banda Ancha, Compatibles Icom



Ref.	I4-V-SMA-M	I4-U-SMA-M
Type Tipo	Wide Band	Wide Band
Frequency Frecuencia	VHF 136-174 Mhz	UHF 400-470 Mhz
Max Power Rating Potencia Máxima	50W	50W
Gain Ganancia	1.8 dBi	1.8 dBi
Radiation Radiación	Omni	Omni
Polarization Polarización	Vertical	Vertical
VSWR	Less than 2.5	Less than 2.5
Height Altura	89 mm	89 mm
Connector Type Tipo de conector	SMA-Male 	SMA-Male 

Mobile Commercial Antennas

Antenas Móvil Comercial



Ref.	PWR-285-V	PWR-285-VS	PWR-M150-GSA (Chrome)	PWR-M150-GSA-B (Black)	PWR-MA-200-U	PWR-MA-200-V
Type Tipo	Antena Móvil Abatible 5/8	Antena Móvil Robust spring Muelle reforzado 5/8	Antena Móvil Robust spring Muelle reforzado 1/4	Antena Móvil Robust spring Muelle reforzado 1/4	Antena Móvil 5/8	Antena Móvil 1/4
Gain Ganancia	3.4 dB	3.4 dB	2.15 dbi	2.15 dbi	3.5 dBi	2.15 dBi
Frequency Frecuencia	VHF 134 - 174 MHz	VHF 134-174 MHz	VHF 134-174 MHz	VHF 134-174 MHz	UHF 400-480 MHz	VHF 134-174 MHz
Max Power Rating Potencia Máxima	150W	150W	200W	200W	150W	150W
Impedance Impedancia	50 Ω	50 Ω	50 Ω	50 Ω	50 Ω	50 Ω
Height Altura	1320 mm	1320 mm	510 mm	510 mm	500 mm	500 mm
Connector Conector	PL	PL	PL	PL	PL	PL

Fiber-glass VHF Antennas

Antenas de Fibra de Vidrio VHF

All versions include Cutting Chart

Todas las versiones incluyen Diagrama de Corte



Ref.	PWR-BC-100-L	PWR-BC-100-H	PWR-BC-103-L	PWR-BC-103-H
Type Tipo	Antena Base Ajustable Fibra Vidrio	Antena Base Ajustable Fibra Vidrio	Antena Base Ajustable Fibra Vidrio No Radials Sin radiales	Antena Base Ajustable Fibra Vidrio No Radials Sin radiales
Band Banda	VHF + Banda Aérea	VHF	VHF + Banda Aérea	VHF
Frequency Frecuencia	115-150 MHz	134-174 MHz	115-150 MHz	134-175 MHz
Max Power Rating Potencia Máxima	350W	350W	300W	300W
Impedance Impedancia	50 Ω	50 Ω	50 Ω	50 Ω
Height Altura	1700 mm	1700 mm	1580 mm	1580 mm
Gain Ganancia	3.4 dBi	4.5 dBi	3.0 dBi	3.2 dBi
Connector Conector	PL	PL	N	N

Fiber-glass UHF Antennas

Antenas de Fibra de Vidrio UHF

All versions include Cutting Chart

Todas las versiones incluyen Diagrama de Corte



Ref.	PWR-BC-200-L	PWR-BC-200-H	PWR-BC-203-L	PWR-BC-203-H
Type Tipo	Antena Base Ajustable Fibra Vidrio	Antena Base Ajustable Fibra Vidrio	Antena Base Ajustable Fibra Vidrio No Radials Sin Radiales	Antena Base Ajustable Fibra Vidrio No Radials Sin Radiales
Band Banda	UHF	UHF	UHF	UHF
Frequency Frecuencia	400-460 MHz	430-490 MHz	400-460 MHz	430-490 MHz
Max Power Rating Potencia Máxima	200W	200W	300W	300W
Impedance Impedancia	50 Ω	50 Ω	50 Ω	50 Ω
Height Altura	1700 mm	1700 mm	1580 mm	1580 mm
Gain Ganancia	6.5 dBi	6.5 dBi	7.2 dBi	7.2 dBi
Connector Conector	N	N	N	N

Professional Directive Antennas. Gamma match adjust

Antenas Directivas Profesionales. Ajuste gama match



Ref.	YG-4E-V-1	YG-4E-V-2	YG-4E-V-3
Type Tipo	Directive Antenna 4 Elements <i>Antena Directiva 4 Elementos</i>	Directive Antenna 4 Elements <i>Antena Directiva 4 Elementos</i>	Directive Antenna 4 Elements <i>Antena Directiva 4 Elementos</i>
Gain Ganancia	7 dB (9.15 dBi)	7 dB (9.15 dBi)	7 dB (9.15 dBi)
Frequency Frecuencia	VHF 134-148 MHz	VHF 140-160 MHz	VHF 160-174 MHz
Max Power Rating Potencia Máxima	500W	500W	500W
Impedance Impedancia	50 Ω	50 Ω	50 Ω
S.W.R R.O.E	1.3 : 1	1.3 : 1	1.3 : 1
Dimensions Dimensiones	153 x 10 x 8 cm	153 x 10 x 8 cm	153 x 10 x 8 cm
Front to Back Ratio Rel. Frente / Espalda	18 dBd	18 dBd	18 dBd
Max. Element Length Max. Long. Elemento	1097 mm	1097 mm	1097 mm
Boom Length Longitud Larguero	1300 mm	1300 mm	1300 mm
Connector Conector	N	N	N

Professional Directive Antennas. Gamma match adjust

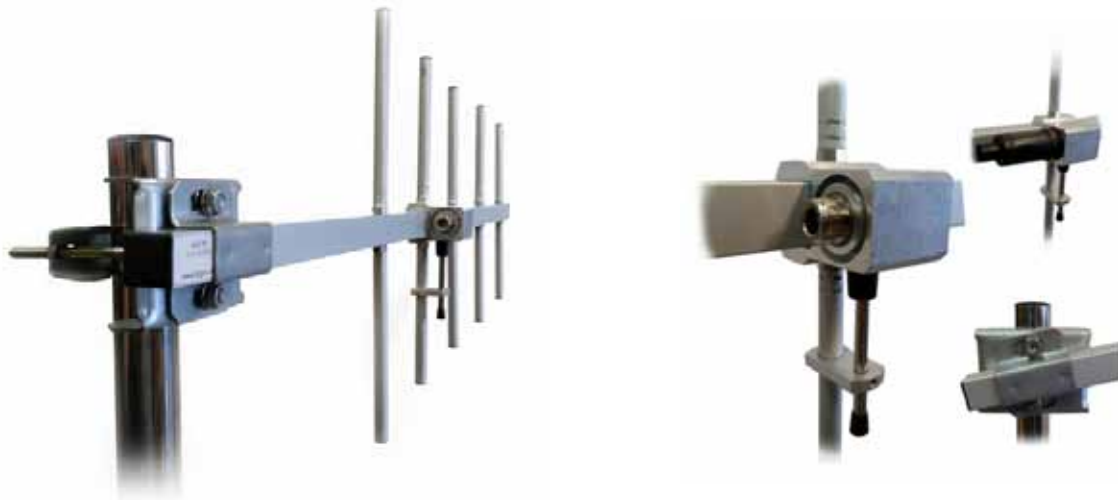
Antenas Directivas Profesionales. Ajuste gama match



Ref.	YG-6E-V-1	YG-6E-V-2	YG-6E-V-3
Type Tipo	Directive Antenna 6 Elements <i>Antena Directiva 6 Elementos</i>	Directive Antenna 6 Elements <i>Antena Directiva 6 Elementos</i>	Directive Antenna 6 Elements <i>Antena Directiva 6 Elementos</i>
Gain Ganancia	10 dB (12.15 dBi)	10 dB (12.15 dBi)	10 dB (12.15 dBi)
Frequency Frecuencia	VHF 136-146 MHz	VHF 146-160 MHz	VHF 160-174 MHz
Max Power Rating Potencia Máxima	150W	150W	150W
Impedance Impedancia	50 Ω	50 Ω	50 Ω
S.W.R R.O.E	1.5 : 1	1.5 : 1	1.5 : 1
Dimensions Dimensiones	10 x 210 cm	10 x 210 cm	10 x 210 cm
Front to Back Radio Rel. Frente / Espalda	16 dBd	16 dBd	16 dBd
Max. Element Length Max. Long. Elemento	965 mm	965 mm	965 mm
Boom Length Longitud Larguero	2000 mm	2000 mm	2000 mm
Connector Conector	N	N	N

Professional Directive Antennas. Gamma match adjust

Antenas Directivas Profesionales. Ajuste gama match



Ref.	YG-5E-U-1	YG-5E-U-2	YG-5E-U-3	YG-5E-U-4
Type Tipo	Directive Antenna 5 Elements <i>Antena Directiva 5 Elementos</i>	Directive Antenna 5 Elements <i>Antena Directiva 5 Elementos</i>	Directive Antenna 5 Elements <i>Antena Directiva 5 Elementos</i>	Directive Antenna 5 Elements <i>Antena Directiva 5 Elementos</i>
Gain Ganancia	9 dB (11.15 dBi)	9 dB (11.15 dBi)	9 dB (11.15 dBi)	9 dB (11.15 dBi)
Frequency Frecuencia	UHF 400-415 MHz	UHF 415-430 MHz	UHF 430-445 MHz	UHF 445-460 MHz
Max Power Rating Potencia Máxima	500W	500W	500W	500W
Impedance Impedancia	50 Ω	50 Ω	50 Ω	50 Ω
S.W.R R.O.E	1.2 : 1	1.2 : 1	1.2 : 1	1.2 : 1
Dimensions Dimensiones	153 x 10 x 8 cm	153 x 10 x 8 cm	153 x 10 x 8 cm	153 x 10 x 8 cm
Front to Back Radio Rel. Frente / Espalda	20 dBd	20 dBd	20 dBd	20 dBd
Max. Element Length Max. Long. Elemento	347 mm	347 mm	347 mm	347 mm
Boom Length Longitud Larguero	945 mm	945 mm	945 mm	945 mm
Connector Conector	N	N	N	N

Professional Directive Antennas. Gamma match adjust

Antenas Directivas Profesionales. Ajuste gama match



Ref.	YG-9E-U-1	YG-9E-U-2	YG-9E-U-3	YG-9E-U-4
Type Tipo	Directive Antenna 9 Elements <i>Antena Directiva</i> 9 Elementos	Directive Antenna 9 Elements <i>Antena Directiva</i> 9 Elementos	Directive Antenna 9 Elements <i>Antena Directiva</i> 9 Elementos	Directive Antenna 9 Elements <i>Antena Directiva</i> 9 Elementos
Gain Ganancia	10 dB (12.15 dBi)	10 dB (12.15 dBi)	10 dB (12.15 dBi)	10 dB (12.15 dBi)
Frequency Frecuencia	UHF 400-415 MHz	UHF 415-430 MHz	UHF 430-445 MHz	UHF 445-460 MHz
Max Power Rating Potencia Máxima	150W	150W	150W	150W
Impedance Impedancia	50 Ω	50 Ω	50 Ω	50 Ω
S.W.R R.O.E	<1.5 : 1	<1.5 : 1	<1.5 : 1	<1.5 : 1
Dimensions Dimensiones	90 x 120 cm	90 x 120 cm	90 x 120 cm	90 x 120 cm
Front to Back Ratio Rel. Frente / Espalda	12 dBd	12 dBd	12 dBd	12 dBd
Max. Element Length Max. Long. Elemento	335 mm	335 mm	335 mm	335 mm
Boom Length Longitud Larguero	1150 mm	1150 mm	1150 mm	1150 mm
Connector Conector	N	N	N	N

www.komunicapower.com



Komunica Power Accessories S.L.

Ctra. de Castellar, 537, Pol. Ind. Can Petit

08227 - Terrassa (BCN) - SPAIN

(+34) 93 884 35 07

info@komunicapower.com

OFFICIAL DEALER / DISTRIBUIDOR



0718

All trademarks are the property of their respective owners.
Todas las marcas registradas son propiedad de sus respectivos propietarios.